



# Raintree Newsletter

The official newsletter of Raintree Foundation

## Raintree Foundation organizes Shramdaan in Gunjwane, Velhe

**Together with Raintree, villagers take charge of managing sustainable water supplies, mitigating climate change, and recycling environmental resources**



Raintree Foundation has been working on sustainable landscape management for the past 4 years in 9 villages of Velhe taluka. On 25th April 2023, in collaboration with Gunjwane Gram Panchayat of Velhe taluk, Raintree Foundation took an important step in the watershed project of the organization by conducting Shramadaan activities in Gunjwane village of Velhe. Water plays a crucial role in various development-related activities, and water conservation has significantly increased agriculture and related livelihoods in many parts of India. It is evident that water conservation at both landscape and farmland levels can help to retain water within the catchment for extended periods, beyond the monsoon season.

In the intervention area of the project, located within the Northern Western Ghats, the terrain is characterized by small, terraced farms, steep slopes, low soil thickness, and underlying hard rock, resulting in challenges in impounding water in mid and high lands due to heavy rainfall. This has adversely affected the local communities, particularly farmers, who rely on the river for irrigation and other agricultural activities. Household demand of water also severely goes up with limited resources to meet the growing demand, leading women to spend additional time on collecting of water or dependency on water tankers. Consequently, it is crucial to prioritize the strengthening of water sources to provide drinking water to key target community stakeholders in project villages.

This project involved desilting of the percolation tank. It aimed to remove the accumulated sediments from the percolation tank, increase the recharge potential, and promote a healthy ecosystem.

The project involved the use of manual labour and machinery to remove the silt and transport them to designated disposal sites. Leena Dandekar, Founder, Raintree Foundation expressed enthusiasm for the project, stating that "Shramadaan has been a traditional concept in most rural communities since centuries and is a wonderful opportunity for all stakeholders to come together to ensure a collective goal. We conduct this unique ground water recharge project annually as an important tool for building climate resilience. Raintree Foundation's hydrogeological approach of recharging the aquifers will address water insecurity and provide soil moisture conservation for the larger ecosystem."

The project has received support from local authorities and community organizations, who recognize the importance of sustainable water management in the region.

### About the Project -

- This project resulted in the removal of 7200 cu.ms of silt.
- 150 community members of the village, the entire team of Raintree Foundation and Gunjawane Gram panchayat took part in the activity
- A contour survey of the area was undertaken to understand the impact of the works, both scientifically and technically
- The rainwater harvested will lead to recharging of the sub surface aquifer which will help in retaining the groundwater level for a longer duration
- The work will generate a total capacity of 4500000 litres of static water in terms of recharge capacity
- Continuous monitoring after the monsoons will help us understand the true impact of the desilting works



## Third year of SRI farming

Velhe Taluka is well known for its rice cultivation. However, over the past few years, there has been a decline in the number of rice cultivators in the village. A low production level, high expenditures, and job opportunities from paddy cultivation have caused farmers to relocate to the city. In order to avoid all this and increase farmers' incomes at a lower cost, the Raintree Foundation introduced System of Rice Intensification. As the SRI method reduces cultivation costs, reduces laborers, decreases water use, and can double the yield due to scientific cultivation, it is necessary to implement the method. After reviewing the experience of the SRI method of farming, farmers stated that it was essential to do SRI on the same principle this year. The Raintree Foundation continues to provide training and assistance to farmers by emphasizing the SRI Rice System in this year's training program. As part of the training, a Shivar Pheri was held in the village of Ghawar. An inspection was conducted of the type of land, the water source, and the crops. The first agriculture pledge was taken during the training by visiting the villages in the project area. The session was followed by a discussion of identification and expectations. During the discussion session, the SRI Method, its benefits, and its differences from traditional farming methods were explained. There was a demonstration of how to select land for cultivation. It also demonstrated how to process the seeds and the necessary materials, as well as how to make the mattress once the seeds have been processed. Throughout the process, farmers were informed and educated about the entire SRI Method. 50 farmers participated in the project.



# Raintree Foundation's Water Conservation Efforts Improve Access to Safe Drinking Water in Velhe



Raintree Foundation is working to provide clean and safe water to villages in Velhe taluka. Their water conservation projects aim to solve issues like water scarcity and pollution, benefiting many families in the area.

One important project by Raintree Foundation focuses on fixing the water tank in Malwadi, Ghawar village. The tank was leaking, causing a lot of water wastage. The foundation repaired the tank's drainage to ensure a steady water supply to 12 households. The repair work is now completed.

In the village of Merawane, the wall of a well was too low, letting rainwater mix with the soil in the well. The foundation increased the wall's height and added metal nets to prevent leaves and waste from polluting the well. This has helped 22 families access clean water.

The foundation also built a new well in the Dardige vasti, Phanshi village, to provide clean water to households. In Chirmodi village, they repaired the gram panchayat well, benefiting 85 families.

The foundation recognized the water problem in Gunjavane village and installed a culvert on a well to solve the issue. This brought clean water to many houses in the area. Additionally, in Dadwadi village, the foundation repaired dams to improve irrigation and water availability for animals, recharging nearby wells.

Through water conservation, better water quality, and improved infrastructure, Raintree Foundation is positively impacting countless families. These efforts also contribute to broader environmental and sustainable development goals. As these projects continue, they can inspire other water-scarce areas.

## Raintree Foundation's Eco-Tourism Exposure Visit: Embracing Purushwadi's Enchanting Fireflies and Community-Based Rural Tourism



On the 8th and 9th of June 2023, Raintree Foundation organized a two-day exposure visit for the Gunjavane community to the picturesque village of Purushwadi. Nestled in Akole Taluka, Ahmednagar District, Maharashtra, Purushwadi is renowned for its community-based rural tourism model and captivating firefly festival, where vibrant fireflies light up the night sky.

The village's sustainable tourism initiatives are currently led and promoted by Grassroutes, an organization bridging the urban-rural cultural divide. The exposure visit welcomed 12 participants, including members of the Biodiversity Management Committee, Gram Panchayat, Women's group, and Environment friends from Gunjavane village. The primary objective was to gain insights into promoting environment-oriented rural tourism in Gunjavane, a village located at the foothills of the majestic Rajgad fort, attracting numerous tourists year-round. Participants had the opportunity to explore the intricacies of Community-based Rural Tourism, strategies to manage non-degradable waste generated by tourism activities, the vital role of women and youth groups in eco-tourism, and the art of hospitality and homestay maintenance. Alongside learning about the tourism setup, the visit also included a captivating nature trail through the surrounding forests, immersive experiences at campsites and homestays, and witnessing the enchanting flickering of fireflies during the memorable trip to Purushwadi.

## Nurturing Sustainable Farm-Based Fish Farming



In a successful collaboration, Raintree Foundation and Rotary Club Chinchwad launched a farm-based fish farming training program last year. Participating farmers are now witnessing the growth of fish in their farms. The training program covers a range of topics, including market studies, sales techniques, and study tours. Farmers have been given opportunities to visit fish markets and hotels in Pune, Velhe, and Nasrapur, conducting insightful studies on fish sourcing, quality, and appearance. Additionally, actual fishing demonstrations have been organized to familiarize farmers with effective sales methods.

With the support of partner organization Jaljivika and Raintree, experts regularly engage with farmers, sharing experiences from study tours and discussing the benefits of fishing and various fish types. Through these ongoing interactions, farmers receive essential guidance to thrive in their fish farming endeavors.





## EXPERT COLUMN

# Invaluable SRI Methods For Farmers



**Avil Borkar, Secretary  
Rural Youth Progressive  
Board Committee**

### Advantages of SRI method -

- Grain and tuber production increased
- Requires less water
- The insufficient proportion of thick follicles
- Increasing weight without affecting grain size
- Cyclone-resistant
- Resistant to cold temperatures
- Improves soil health due to biological movement

In this method, maximum production is obtained with minimum water and minimum cost. This method is beneficial to small and marginal farmers for food security. This method was developed by Father de Laulain on the African island of Madagascar. It was his principle that this method not only fulfills the needs of the people but also improves their standard of living and develops human resources. Due to the low capital requirement of this method, it is beneficial to the poor as it does not require loans and farmers are not indebted. Food security for the poor.

### When to harvest?

**Moisture content** - The moisture content of the grain should be around 18 to 22%. The grains should be firm and firm but should not crumble when pressed into the teeth.

**Ripe Grains Per Panicle** - Harvest when 80 to 85% of the field is green to mature yellow. When harvesting paddy with a sickle or knife, cut the paddy straw at a distance of 4 to 5 cm from the ground and do not leave too much of the vertical portion above the ground. Always cut and destroy straws as low as possible from the ground. Destroy the straw stumps and mix them with the soil by hoeing immediately after harvest and preparing them for the next season.

**Threshing** - Harvested paddy should be threshed simultaneously on the day of harvest itself. Paddy straws and panicles harvested due to overnight rain or morning dew should be dried in the field before threshing. Mostly half day in the morning is reserved for harvesting and the remaining half day should be threshed.

After threshing, dry the grain thoroughly both in the open and in the shed immediately to prevent fermentation. If moisture remains in the pile or bag of grain for too long, the grain starts to ferment.

**Drying** - To dry the rice, spread the grains evenly on plastic or sacks in the sun. Apply a thick layer of 4 to 5 cm. Every 30 minutes, using a garden weed, gently turn the grain up and down using your hands and feet. As the rice is slowly dried upside down, it does not crack. In contrast, quick and immediate drying causes the rice to break and crumble when milled.

It is better to dry the rice in a shaded place for 3 days without drying it in direct sunlight. This can keep the grain safe from sudden rains. Dry the grain occasionally in direct sunlight for 30 minutes per day. Make sure that the temperature of the floor or surface on which you are drying the rice does not exceed 36 degrees Celsius. This temperature should always be below 36 degrees Celsius. If this grain is to be kept for further sowing, high temperature destroys the embryo of this grain. When bagging rice with high moisture content, keep the mouth of the bag open on all sides to allow the moisture and moisture to escape from the bag.

**Cleaning** – It is the process of removing rice straw, other waste and immature, empty grains from rice after threshing and drying. These factors can include excess amounts of husks, other waste such as soil, sand, small pebbles, metal scraps, plastics, paper bags, sticks, plant branches, wood chips, other grains, and other toxic substances. This increases the weight and number of sacks of rice and increases the cost of transporting the sacks. Also, the amount of money to be paid to the mill owner and the risk of grain waste to his milling machine.

### Storage -

- Grain moisture should be maintained at or below 14%
- Don't keep sacks of rice on the ground
- The bag of rice should be placed at a height of 20 cm from the ground
- The longer the bags are to be stored, the lower the humidity should be
- Cereal and rice seeds stored at a moisture content above 14% wb show complaints of early pest infestation, reduced usability, and reduced eating quality
- If the moisture content of the rice in the sack is high, open the mouth of the sack and let the moisture, steam, and heat stored inside escape. It is better to spread the moist rice on plastic and let it dry at natural room temperature

## Empowering Livelihoods: Raintree Foundation's Poultry Project Nurtures Entrepreneurship



As part of its commitment to creating sustainable livelihood opportunities, Raintree Foundation initiated the Poultry Project in nine villages of Velhe taluka under the Sustainable Landscape Management program. This project not only aims to enhance food security in the villages but also empowers beneficiaries from diverse backgrounds, including 10 disabled individuals and 15 widows and destitute individuals. Additionally, 15 farmers eagerly embraced entrepreneurship through this initiative. Presently, a total of 920 fully vaccinated chickens have been distributed, and 40 households are now proud recipients of 920 DP cross breed chicks, carefully selected to suit the local climate and conditions. The project encourages inclusivity, encompassing people from all strata of society. To ensure expert guidance and technical assistance, Raintree Foundation sought support from Vigyan Ashram. The Community Resource Persons of Raintree underwent two days of residential training at Vigyan Ashram in Pune in May, equipping them with essential skills to guide and supervise the project effectively. With the expertise of professionals and under the guidance of experts, Raintree Foundation's Poultry Project is flourishing, empowering individuals and communities to take bold strides towards self-reliance and entrepreneurship.



## Career Guidance Learnings for Velhe Students



Raintree Foundation organized an exposure visit for students from nine villages in Velhe on 18th May 2023, with the aim of empowering youth and creating opportunities for a brighter future. The visit took the students to Vigyan Ashram in Pabal and Wadgaon Sheri Lighthouse, where they gained valuable insights and explored various career paths.

At Vigyan Ashram, the students were introduced to a range of vocational courses and had the opportunity to explore different technologies and development programs. They learned about courses such as bakery, hand embroidery, beauty parlour, nursing, technology, engineering and much more. The students also shared their dream careers, allowing the organizers to guide them towards suitable possibilities. Following their visit to Vigyan Ashram, the students went to Wadgaon Sheri Lighthouse, where they were exposed to multiple career opportunities. They participated in activities focused on personality development, aptitude tests, and technology-driven opportunities. Interactive games and team-building activities further enhanced their understanding of different career paths.

Accompanied by mentors and volunteers from Raintree Foundation, a total of 44 students participated in the visit. The students showed great enthusiasm and eagerness to learn and grow, and the exposure visit had a lasting impact on their aspirations and ambitions. The experience provided them with valuable insights into vocational fields and ignited their entrepreneurial spirit. Through initiatives like this exposure visit, Raintree Foundation is committed to empowering youth and creating opportunities for them to thrive. By providing practical skills and guidance, the organization aims to help young individuals build successful careers and become valuable members of society.

### Strengthening Biodiversity Conservation: Capacity-Building Program for BMC Members



As part of its BMC strengthening project, Raintree Foundation organized a two-day capacity-building and training program on April 12th and 13th, 2023, for all members of our 5 BMCs. The primary objective of this program was to educate the BMCs about their roles and responsibilities as biodiversity conservation bodies at the village level, in accordance with the Biological Diversity Act (2002). Additionally, the capacity-building training aimed to encourage the BMCs to actively participate in various environmental conservation initiatives led by Raintree Foundation in their respective villages.

This program marked a significant milestone as the first-of-its-kind capacity-building initiative for the BMC members. The training was conducted by esteemed technical partners, Dr. Girish Jathar and Dr. Rahul Mungikar, representing the Srushti Conservation Foundation (SCF), Pune. With 38 members of the 5 BMCs in attendance, the training course focused on developing capacities through interactive informational sessions covering topics such as the importance of protecting and conserving biodiversity, the framework and administrative structure of BMCs, and the crucial role of BMCs as custodians of their biodiversity and Indigenous Traditional Knowledge, as defined by the Biological Diversity Act (2002).

Looking ahead, there are plans to organize additional capacity-building training sessions for the BMCs, further enhancing their capabilities in biodiversity management.

### Unveiling Biodiversity: Raintree Foundation and Meravane-Phanshi BMC Exhibition



On May 22nd, 2023, Raintree Foundation, in collaboration with the Meravane-Phanshi Biodiversity Management Committee, organized a captivating exhibition in Meravane village to commemorate International Biodiversity Day. Aligned with the United Nations' theme for this year, "From Agreement to Action: Build Back Biodiversity," the exhibition showcased the People's Biodiversity Register (PBR) and an impressive collection of native seeds and grains from the Meravane-Phanshi BMC.

The People's Biodiversity Register (PBR) stands as a comprehensive repository, documenting the diverse biodiversity and the rich traditional knowledge associated with the region. Visitors were provided with an invaluable opportunity to explore the wealth of information stored in the PBR and grasp its profound significance in biodiversity conservation.

Over 90 attendees from various villages within Raintree Foundation's program landscape graced the event, coming together to celebrate this momentous day. Distinguished BMC members took center stage, addressing the audience and stressing the urgency for collective action in safeguarding biodiversity. Mr. Satyavan Renuse, the Chairperson of Meravane-Phanshi BMC, delivered an impassioned speech, underscoring the crucial role of people's active participation in environmental protection and conservation efforts for their resounding success.



## Empowering Children for Climate Resilience: Raintree Foundation's World Water Day Focus on Water Quality



As climate change affects us all, untimely rains, heavy downpours, and droughts are becoming common consequences. Recognizing the critical role of water quality in mitigating climate change's impact, Raintree Foundation recently celebrated World Water Day in schools across Velhe taluka. The focus was to emphasize the significance of water and its quality, particularly for children aged 7 to 15 years.

During this event, children were engaged through demonstrations, learning how to assess water quality by checking factors like pH levels and identifying properties that are not visible to the naked eye. Exciting experiments were conducted in classrooms, where students learned to identify water quality based on color and smell. The program highlighted that water quality is equally crucial alongside water availability, especially in preventing waterborne diseases among children and the elderly. As part of an ongoing effort, Raintree Foundation plans to conduct more such programs on water safety with children in the future. This initiative marks the first step in a series of empowering actions to safeguard water resources and foster a sustainable environment in the face of climate change.

## Seed Collection Drive for Biodiversity Conservation



On June 5th, 2023, Raintree Foundation, in collaboration with the State Forest Department, Gunjavane BMC, and Gram Panchayat, organized a seed collection drive to mark World Environment Day. The initiative commenced from Chhtrapati Shivaji Sabhagruha in Gunjavane village, with a diverse group of 65 participants, including school children, youth, and adults, coming together to contribute to the cause.

Collectively, they gathered seeds from 21 different species of native trees found in and around the forests of Gunjavane village. The species included Hirda, Baheda, Ain, Bahava, Kinhai, Karanj, Kalamb, and more. Emphasizing the importance of sustainability, only seeds that had fallen naturally on the ground were collected. Part of Raintree Foundation's Environment Education initiative, the program offered participants a captivating nature trail through Gunjavane's lush forests. During this expedition, the attendees gained valuable insights into various tree species, understanding their phenology—the cycle of flowering and fruiting—as well as their vital role within the ecosystem. They also learned about the trees' medicinal value for humans and their role in pest control.

The seed collection drive served a dual purpose—it raised awareness among future custodians about the significance of environmental conservation efforts and highlighted the importance of protecting plants from forest fires.

## Promoting Gender Equality: Empowering Men for Positive Change



In June, the Raintree Foundation continued its efforts to promote gender equality and empower men in 9 villages of Velhe Taluka. Through a series of village-level meetings, the foundation challenged prevailing gender norms and expectations. The screenings of the short-animated film 'The Impossible Dream?' in May resonated with men, who acknowledged the unequal distribution of domestic responsibilities and expressed their willingness to actively participate in promoting gender equality.

The foundation used thought-provoking case studies to explore gender roles and expectations in society. Men engaged in open discussions, recognizing the need for change and equal decision-making within families. Although some faced challenges in certain villages due to deeply ingrained cultural norms and caste constraints, the foundation remained committed to fostering a culture of sensitivity towards gender issues. The village-level meetings aimed to be inclusive and representative of various backgrounds, but challenges arose in some places. Despite this, the foundation remains determined to create open spaces for dialogue and promote gender equality.

During the discussions, misconceptions about laws supporting women's rights and scheduled castes were addressed. The foundation emphasized the importance of promoting equality and dignity for all individuals, regardless of historical context. Moving forward, Raintree Foundation plans to continue these meetings, striving to engage men from diverse backgrounds and communities. By encouraging open dialogue and addressing misconceptions, the foundation aims to create a supportive environment where men actively participate in the pursuit of gender equality.

The foundation's commitment to empowering men and women alike will contribute to a more equitable and just society, benefiting the entire community. Together, they can work towards a future where equal opportunities, respect, and dignity are the norm.



## Bank Sakhi Receives Electric Bicycle Boost from Rotary Club for Enhanced Outreach



The Bank Sakhi initiative, launched in December, has received a positive response from villages in the project area. Swati Kumbhar, the dedicated Bank Sakhi, has once again found a helping hand from the Rotary Club, ensuring she can continue her valuable work without any hindrance. In a generous gesture, Swati Kumbhar has been gifted an electric bicycle by the Rotary Club.

With this new electric bicycle, Swati can now reach villages in the project area more efficiently, providing doorstep services to the villagers in less time. This support from Rotary has not only enhanced her capabilities but also ensured a seamless provision of services to the rural communities. The Rotary Club has consistently supported our Bank Sakhi Swati Kumbhar in her endeavors, demonstrating their commitment to making a positive impact in the lives of people in the region. With the aid of the electric bicycle, Bank Sakhi Swati is empowered to make an even greater difference and foster financial inclusion in the villages she serves.

## Prioritizing Mental Health: Manosarathi Counseling Center Making a Positive Impact



In today's increasingly stressful world, maintaining good mental health is undeniably challenging. Recognizing the importance of mental well-being and the need for a safe space to express emotions, Raintree Foundation established the Manosarathi Counseling Center in December 2022. In just six months, the center has already made a significant difference in the lives of many individuals.

Since its inception, Manosarathi has provided support to 31 people grappling with mental health issues, conducting a total of 120 counseling sessions for those seeking assistance. The dedicated team of experts at Manosarathi works tirelessly to address daily life problems and mental stress, offering effective solutions to improve mental well-being. At Manosarathi, utmost importance is given to confidentiality, ensuring that the identity of individuals sharing their feelings, stress, and anxiety remains safeguarded. All discussions at the center are kept strictly confidential between the patient and the counselor.

Manosarathi Counseling Center provides a trusted and compassionate space for individuals to express their feelings, talk about their problems, and seek guidance. If you need someone to talk to and find the right support, turn to Manosarathi counseling center for a nurturing environment where your mental well-being is valued and cared for.

## Exploring the Beauty: Discovering Exquisite and Rare Flowers and Plants in the Project Area



Single Leaved Habenaria

A species of wild orchid was observed growing on grasslands and hill slopes in Meravane. It is categorised as an IUCN Near-Threatened species. It is threatened by habitat degradation, over-grazing of grasslands and tourism. It is one of the first flowering herbs to appear at the onset of monsoons.



Chaste Tree

Described as a cross between shrub and a tree, Chaste Tree is highly valued for its medicinal properties. The leaves, flowers, seeds, and root of Chaste tree can all be used as herbal medicine. It is commonly found near bodies of water, grasslands, and mixed open forests. It was found growing besides the road going to Meravane.



Golden Eye Grass

A herb which opens a golden yellow flower at the leaf base during flowering period. It is a shade-loving plant and thrives well in areas that receive high rainfall. The roots of the plant are highly valued for its medicinal properties and are used to treat several disorders according to Ayurveda. It was seen growing in Gunjavane.



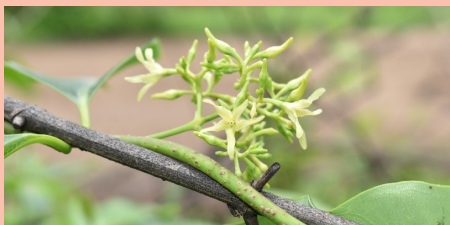
Blue Fountain Bush

A shrub, usually found growing on hill slopes and open grasslands, bear beautiful violet and white flowers. It is also medicinal and finds many uses according to Ayurveda. The flowers are pollinated by bees. It was seen growing on hill slopes in Meravane.



Cup Saucer Plant

It is a shrub which bears fruit in the monsoon. Its flowers are unisexual. It is commonly found in scrub and open forests. It also finds use in folk medicine. It was seen growing in Sakhar and Gunjavane.



Wax Leaved Climber

It is a climber with greenish-yellow flowers. It is commonly found in deciduous and semi-evergreen forests. Caterpillars of the Common Crow butterfly feed on this plant. It also has medicinal use. It was found growing besides road in Sakhar village.





## Career Opportunities !

In this column Raintree will highlight the career opportunities available to you in other organisations. The following courses are offered through Light House. Those who wish to take this course should contact the project office at Sakhar Village, Raintree for more information.

### Bakery Course



Eligibility- 9th Pass  
Duration - 11 Days

### Embroidary Course



Eligibility- 5th Pass  
Duration - 14 Days

### Beauty Parlour Course



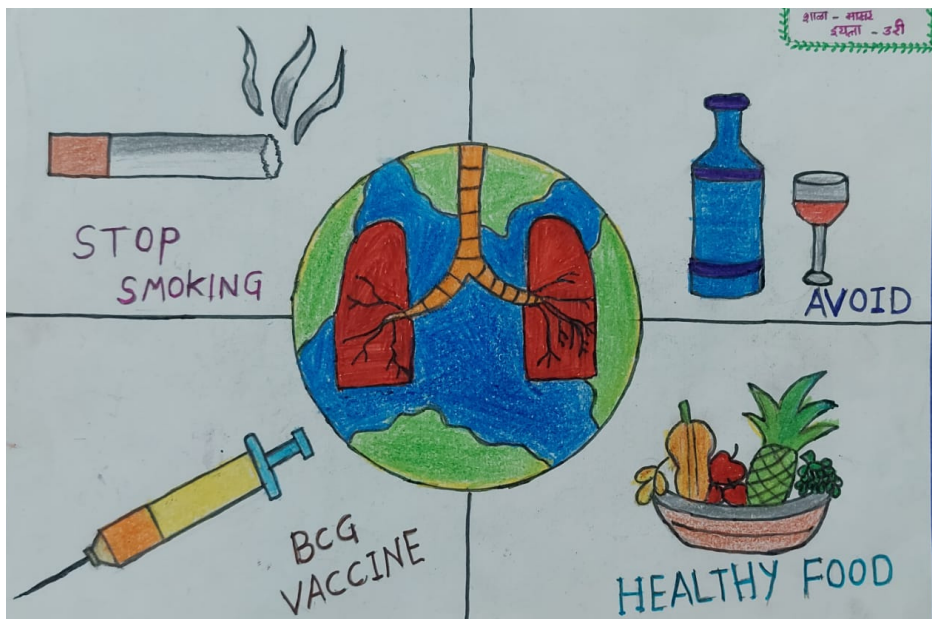
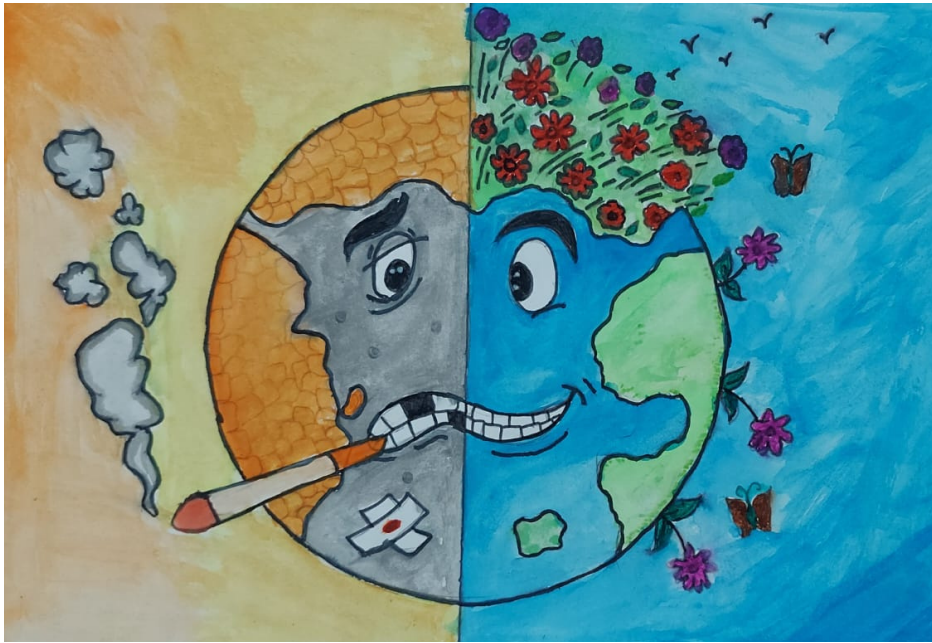
Eligibility- 10th Pass  
Duration - 2 Months

### Care Giver



Eligibility- 8th Pass  
Duration - 2 Months

On June 26, in honor of World Anti-Drug Day, Raintree Foundation took proactive steps to raise awareness among school children in the project area. The foundation organized an engaging awareness program aimed at instilling an understanding of the significance of this day and educating children about the harmful effects of alcohol, cigarettes, and alcoholic beverages on health. During the program, children creatively expressed their insights through captivating pictures, conveying the powerful message to stay away from addictions. A selection of these impactful images is displayed below, serving as a visual reminder of the importance of leading a healthy and drug-free life.







# Vriksha Dindi

"वृक्षवल्ली आम्हा सोयरी"! With these inspirational words of Sant Tukaram, the Raintree Foundation and Sakhar Zilla Parishad School joined hands to organize Vriksha Dindi in the month of June. The participation of the school's children, who became warkaris and walked with the palki, chanting the message of Sant Tukaram. The palkhi, carried by the students made a meaningful stop in front of the village temple, conveying a profound message - "Plant trees, Save trees." The villagers also gathered to witness this auspicious occasion. In the end, the students wholeheartedly pledged to protect the environment and vowed to carry forward the timeless message of Saint Tukaram.



## Eco Friendly Ganesh Decoration Competition



Let's warmly embrace Ganapati Bappa with joy, while keeping our environment unharmed! As tradition goes, the Raintree Foundation is proud to host this year's Eco-Friendly Ganapati Decoration Competition.

**Contest Guidelines:** Create your Ganapati decoration using eco-friendly materials; refrain from using plastic and thermocol. Kindly provide your names to our CRP (Community Relations Person) to enroll in the contest. Prizes will be granted to the top three decorations.

## Upcoming Workshops and Programs

### Livelihood -

Two day workshop on SRI farming  
Meetings with poultry farmers  
Meetings with fish farmers  
Training on women food enterprise

### Environment -

Wild vegetable festival  
Environment education in schools  
Shramadaan for tree plantation

### Gender Equality -

Awareness sessions on gender and mental health  
Women Gram Sabha



## It is a Summer Camp Time!

Raintree Foundation organized a two-day summer camp for children from nine Velhe villages, continuing their community development efforts. Focusing on environmental conservation, water security, gender equality, and mental health, the camp used interactive games for engaging learning experiences.

The mental health activity featured a Snake & Ladders game, introducing children to various emotions and emphasizing empathy and well-being. Challenging gender stereotypes, another activity encouraged children to choose tasks based on personal interests, fostering equality and open-mindedness.

Promoting environmental awareness, the children participated in cleanliness exercises, developing a sense of responsibility for their surroundings. An intriguing game demonstrated the consequences of resource overuse, enlightening the children about sustainable resource management and global well-being.

The camp's success showcased the children's enthusiasm and interest, facilitated by interactive learning methods. Raintree Foundation remains committed to shaping future generations through life skills and social consciousness, aiming to create a positive and sustainable impact in their communities.

