

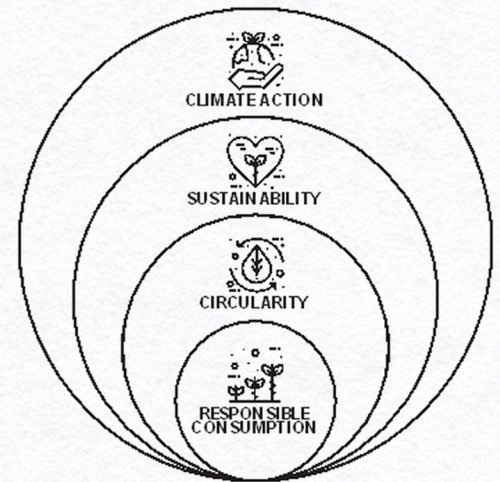


BUILDING CLIMATE RESILIENCE FOR LIVING LANDSCAPES

ABOUT US

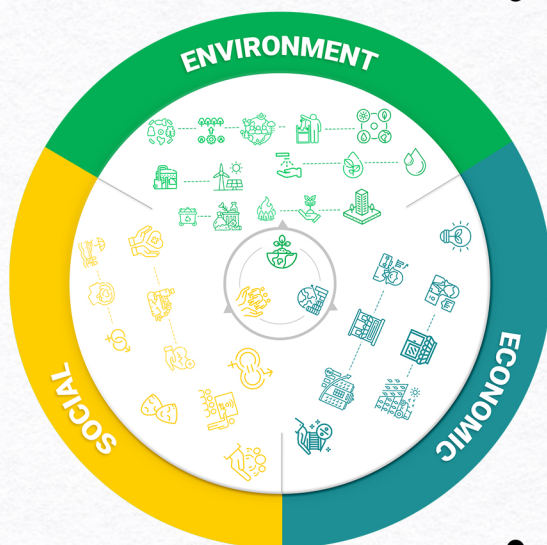
Set up in 2018 by the Dandekar family, Raintree Foundation is committed to building sustainable, resilient and thriving ecosystems – both human and natural.

Our goal is to create a world that fosters community stewardship of the environment through innovative, community-led programs that shift mindsets and lead to systemic change.



THE RAINTREE ETHOS

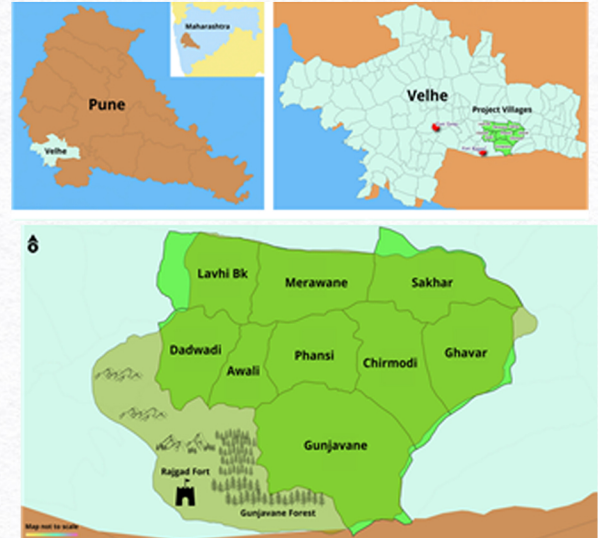
THE LANDSCAPE APPROACH



- Recognizes the interconnections between people and nature for management of land to simultaneously achieve social, economic and environmental objectives.
- This systems-based approach demands an in-depth understanding of the multifunctionality of ecosystems and the roles played by all actors, as well as potential synergies and trade-offs.
- The solutions are customized to the landscape ensuring that the needs and interests of all stakeholders are fully captured.

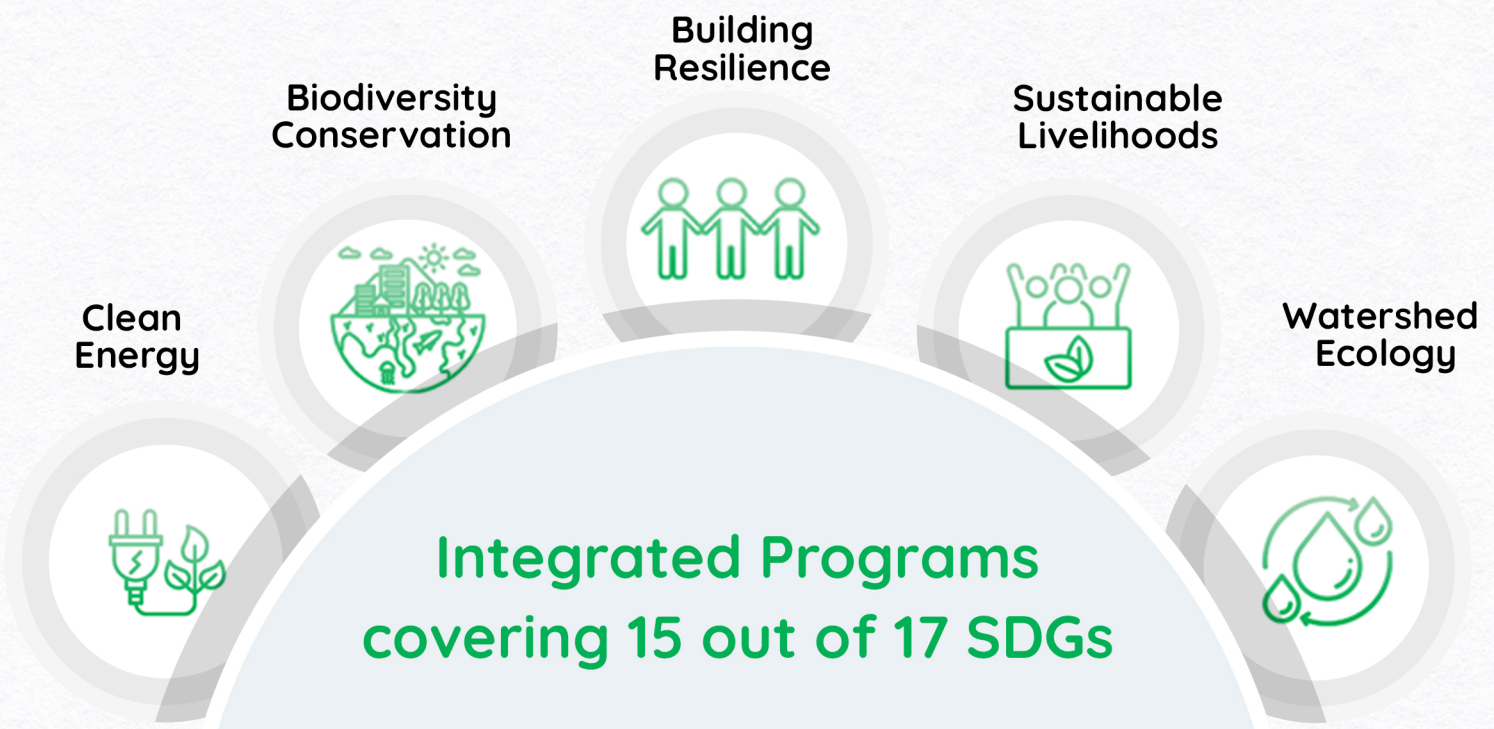
LANDMARK PROJECT IN VELHE

- Global Biodiversity Hotspot.
- Limited livelihood options.
- Compromised water availability through the year despite high rainfall.
- Lowest human development indicators in Pune district.
- Lack of active NGO presence, political insignificance and lack of industries.



Total Area
2100 Hectares | 9 villages

LANDSCAPE APPROACH - PROGRAMS



LANDMARK PROJECT IMPACT REPORT

Watershed Ecology

- Ensured water availability in lean season for 200 households.
- Total water storage increased by 19.7 million litres.
- 4,50,000 litres of filtered water dispensed through new installations.



Biodiversity Conservation

- Successful Bio-mapping of species: 571 plants, 19 mammals, 172 birds, 16 reptiles, 33 odonates, 17 molluscs, 11 fishes.
- Successfully setup 5 Biodiversity Management Committees (as per Biodiversity Act, 2002) across 9 villages.
- 30% reduction in forest fires through mitigation and awareness programs.

Sustainable Livelihoods

- 36% increase in rice production by adopting new techniques.
- 40 new backyard poultries established with an overall profit yield of 140%.
- More than 23 new farm ponds were established for starting fisheries businesses.



Clean Energy

- Adoption of biodigesters and use of biogas by households across 9 villages.
- Reduction in total emissions of 679.8kgs and saving over 300 trees.
- 18.96% conversion to renewable energy.

Building Resilience

- Engaging 2000+ community members in mental health awareness programs.
- First in India to set up rural mental health counseling centers called "Manosarthi" (Mental Health Charioteer).
- Textbooks that foster gender inclusivity are designed and distributed to school students.



For complete Impact Report

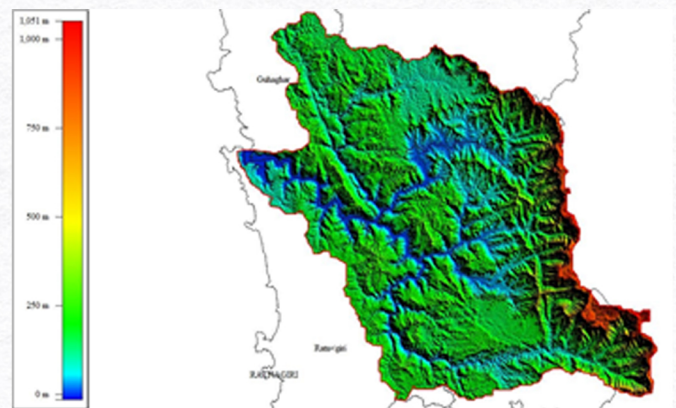
[Click here to download](#)

SCALING UP THE MODEL IN SHASTRI RIVER BASIN (SRB)

Shastri River Basin is located in the Ratnagiri district of Maharashtra, India

Despite its rich biodiversity, the region struggles with:

- Invasive species of flora and fauna, displacing endemic native species.
- Flooding during monsoon months but severe water scarcity in lean periods.
- Reliance on traditional methods of energy, which are major pollutants.
- High outmigration, untapped local potential.
- Inadequate local efforts towards gender parity.



Area Covered: 209800 Hectares
400 Villages

IN THIS GEOGRAPHY, OUR PROGRAMS WILL COVER ALL 17 SDGs



Green
Enterprise



Green
Townships



Watershed
Ecology



Biodiversity
Conservation



Rural
Resilience



Climate Shala
(School Program)



Community
Mental Health

Dignity and Well-Being for Planet and People